



# Virginia Healthcare Workforce Briefs

Indicators from the Bureau of Labor Statistics'  
Current Employment Statistics Survey  
**Series 1: State & National Employment**

Series 1, Issue 143

February 2024

## Inside this Brief:

HC&SA Employment	2
HC&SA Employment Growth	2
Total Nonfarm Payroll	3
Total Nonfarm Payroll Growth	3
About the Data	4

*Data in the report are seasonally adjusted. Self-employed persons, including health professionals in private practice, are not included.*

## Highlights

- ◆ Virginia's Health Care & Social Assistance (HC&SA) sector created 1,700 new jobs in January, a gain that represents a one-month annualized employment growth rate of 4.2%. Over the past three months, HC&SA employment in the state has increased by 7,100. This three-month job gain translates into an even more impressive 6.0% annualized employment growth rate.
- ◆ The national HC&SA sector produced 100,400 new jobs in January, which translates into a 5.6% annualized employment growth rate. With this gain, the national HC&SA sector has now increased employment by more than 100,000 in two of the past three months.
- ◆ Virginia's overall economy enjoyed its strongest month of employment growth since last June after creating 8,700 new jobs in January. This increase in the state's total nonfarm payroll employment represents a one-month annualized growth rate of 2.5%.
- ◆ The overall national economy enjoyed its largest monthly employment gain in one year as national total nonfarm payroll employment increased by 353,000 in January. This monthly employment gain translates into a 2.7% annualized growth rate.

## Data in Brief

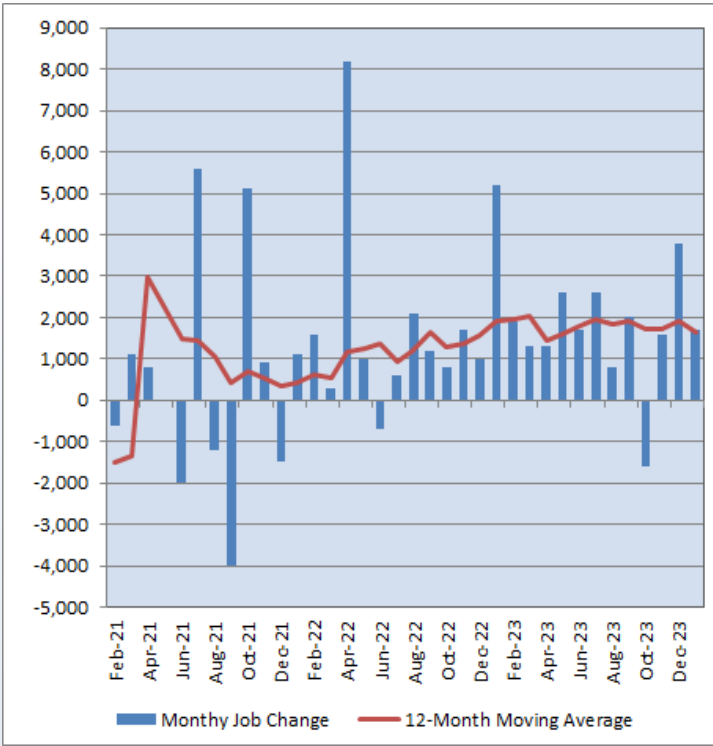
Seasonally Adjusted*	Employment, in Thousands				Growth Rate, Annualized		
	Jan. 2023	Oct. 2023	Dec. 2023	Jan. 2024	12 Month	3 Month	1 Month
<b>Nonfarm, Total</b>							
Virginia	4,140.1	4,182.5	4,191.3	4,200.0	1.4%	1.7%	2.5%
National	154,773.0	156,832.0	157,347.0	157,700.0	1.9%	2.2%	2.7%
<b>Health Care &amp; Social Assistance</b>							
Virginia	472.9	485.5	490.9	492.6	4.2%	6.0%	4.2%
National	21,108.5	21,805.8	21,991.7	22,092.1	4.7%	5.4%	5.6%
<b>All Other Nonfarm</b>							
Virginia	3,667.2	3,697.0	3,700.4	3,707.4	1.1%	1.1%	2.3%
National	133,664.5	135,026.2	135,355.3	135,607.9	1.5%	1.7%	2.3%

Preliminary estimates are italicized

\* Seasonally adjusted data are adjusted by the Bureau of Labor Statistics to account for weather, holidays and other seasonal changes. Economists use seasonally adjusted data to reveal underlying trends over time. This series uses seasonally adjusted data exclusively. When comparing data in this series to other HWDC series, or publications from other sources, it is important to note whether the data reported have been seasonally adjusted.

## HC&SA Employment

**Figure 1: Monthly Change in Employment in Virginia’s Health Care & Social Assistance Sector, Seasonally Adjusted.**



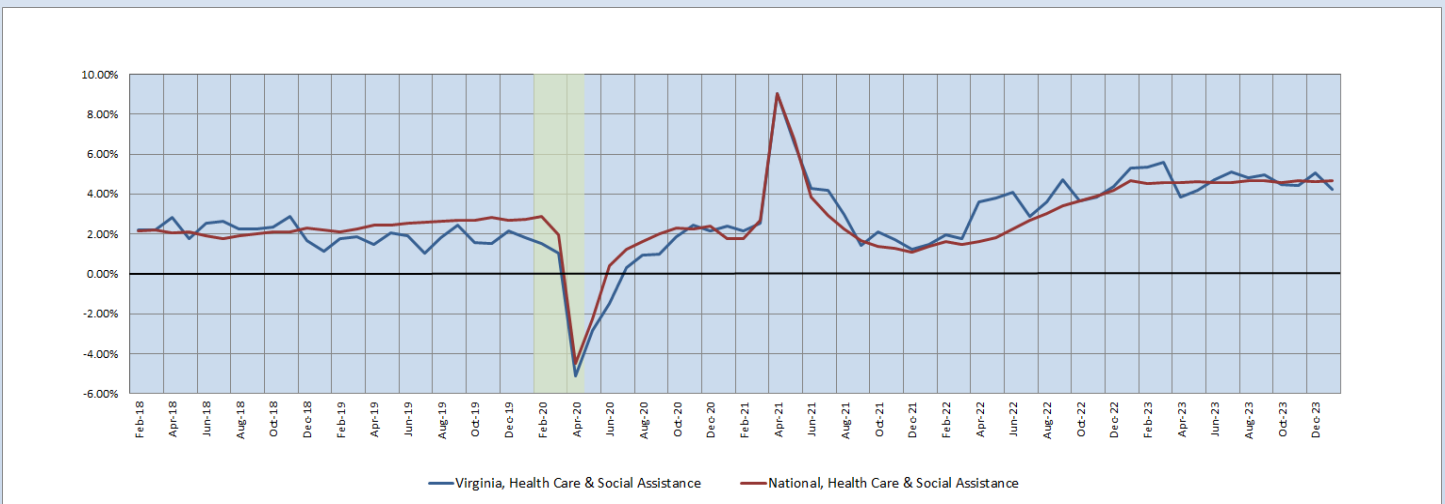
According to the preliminary data released on Monday, March 11, 2024, by the U.S. Department of Labor, Bureau of Labor Statistics, Virginia’s Health Care & Social Assistance (HC&SA) sector created 1,700 new HC&SA jobs in January, a gain that translates into a strong 4.2% annualized employment growth rate. With this gain, HC&SA employment in Virginia has now increased in each of the past three months. In total, Virginia’s HC&SA sector has added 7,100 jobs to the state’s economy over these three months. This three-month job gain represents a 6.0% annualized employment growth rate, which exceeds the comparable 5.4% growth rate for the national HC&SA sector as a whole.

In January, national HC&SA employment increased by 100,400. This monthly job gain translates into an impressive 5.6% annualized employment growth rate. Furthermore, this also represents the second time in the past three months in which national HC&SA employment has increased by more than 100,000, an occurrence that last took place in 2020. Over the past year, the national HC&SA sector has produced a total of 983,600 jobs across the country, which translates into a 4.7% employment growth rate.

## Long-Term HC&SA Employment Growth

Despite enjoying solid job growth in January, Virginia’s HC&SA sector saw its 12-month employment growth rate moving average fall from 5.04% to 4.21% during the month. With this decline, Virginia’s 12-month HC&SA employment growth rate moving average has fallen to its lowest level since last May. Furthermore, it has also fallen below the comparable moving average for the overall national HC&SA sector after having overtaken it only one month previously. In fact, the national HC&SA sector saw its own 12-month employment growth rate moving average rise slightly in January, increasing from 4.61% to 4.66% during the month. This moving average has experienced little variability over the past year: In 2023, it fluctuated within a very narrow range between 4.50% to 4.69%, and this trend has now continued into the start of 2024 as well.

**Figure 2: 12-Month Moving Average, HC&SA Employment Growth, Seasonally Adjusted**

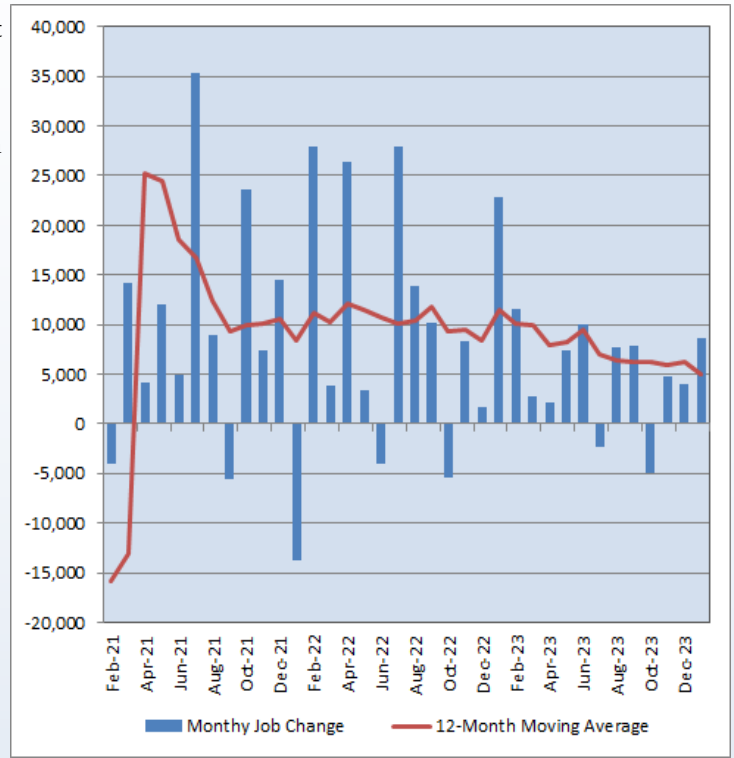


### Total Nonfarm Payroll Employment

Virginia’s overall economy enjoyed a strong start to the new year with the creation of 8,700 new jobs across the state. This increase to Virginia’s total nonfarm payroll employment represents a one-month annualized growth rate of 2.5%. In addition, this also represents the largest monthly employment gain in Virginia’s overall economy since last June. With this gain, Virginia’s total nonfarm payroll employment has now increased in each of the past three months. Over this period, the overall statewide economy has produced 17,500 jobs, which translates into a 1.7% annualized growth rate.

The overall national economy also enjoyed impressive employment growth during the month. In January, national total nonfarm payroll employment increased by 353,000. This increase represents a one-month annualized employment growth rate of 2.7%. Furthermore, this also represents the second consecutive month in which the overall national economy has created more than 300,000 jobs. It has been more than one year since the overall national job market last experienced such growth in back-to-back months. With this gain, national total nonfarm payroll employment has now increased for 37 consecutive months.

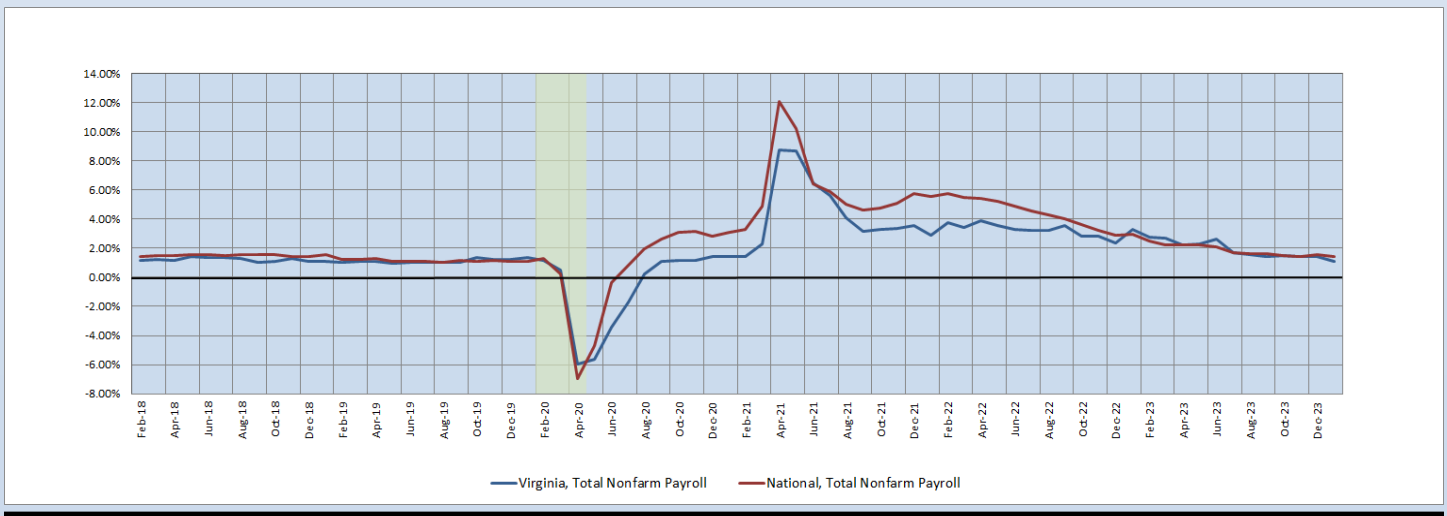
**Figure 3: Monthly Change in Employment in Virginia’s Total Nonfarm Payroll, Seasonally Adjusted**



### Long-Term Total Nonfarm Payroll Employment Growth

Although Virginia and the overall national economy experienced strong job growth in January, their respective 12-month employment growth rate moving averages both declined during the month, thereby continuing the long-term downward trend that has persisted with little interruption over the past two-and-a-half years. Virginia’s overall economy saw its 12-month employment growth rate moving average fall from 1.41% to 1.11% in January. With this decline, the 12-month employment growth rate moving average for Virginia’s overall economy has now fallen to its lowest level since August 2020. Meanwhile, the overall national economy saw its own 12-month employment growth rate moving average decline from 1.57% to 1.46% during the month.

**Figure 4: 12-Month Moving Average, Total Nonfarm Payroll Employment Growth, Seasonally Adjusted**



**Healthcare Workforce  
Data Center**

Perimeter Center  
9960 Mayland Drive, Suite 300  
Henrico, VA 23233-1463

Phone: (804) 597-4213  
Fax: (804) 527-4434  
E-mail: [hwdc@dhp.virginia.gov](mailto:hwdc@dhp.virginia.gov)  
Website: [www.dhp.virginia.gov/PublicResources/  
HealthcareWorkforceDataCenter/](http://www.dhp.virginia.gov/PublicResources/HealthcareWorkforceDataCenter/)

*HWDC Staff:*

Yetty Shobo, PhD <i>Director</i>	Barbara Hodgdon, PhD <i>Deputy Director</i>
Rajana Siva, MBA <i>Data Analyst</i>	Christopher Coyle, BA <i>Research Assistant</i>

Follow us on . . .

Tumblr: <http://vahwdc.tumblr.com/>

The Department of Health Professions' Healthcare Workforce Data Center works to improve the data collection and measurement of Virginia's healthcare workforce through regular assessment of workforce supply and demand issues among the 80 professions and 350,000 practitioners licensed in Virginia by the DHP.

The HWDC collects data on Virginia's licensed health professionals through surveys completed during the online license renewal and application process. Survey results and data may be accessed on our website: [www.dhp.virginia.gov/  
PublicResources/HealthcareWorkforceDataCenter/](http://www.dhp.virginia.gov/PublicResources/HealthcareWorkforceDataCenter/).

The HWDC also provides a series of Virginia Healthcare Workforce Briefs based on data collected by the U.S. Department of Labor's Bureau of Labor Statistics and the U.S. Department of Commerce's Bureau of Economic Analysis.

Virginia Healthcare Workforce Briefs:

Series 1: State & National Employment (Monthly)

Series 2: Virginia Regional & Sectoral Employment (Monthly)

Series 3: Income & Compensation (Quarterly)

---

**About the Data**

Data in this report are from the U.S. Department of Labor, Bureau of Labor Statistics' Current Employment Statistics program. The CES program surveys about 143,000 businesses and government agencies monthly. Unless otherwise noted, this series uses seasonally-adjusted data that removes seasonal variations related to weather, holidays, weekends, seasons and other predictable variations. This allows us to better examine underlying trends in the labor market. Data from recent months are preliminary and subject to revision in future releases from the CES. Revisions will be reported in future editions of this series. Unless otherwise noted, the CES data presented in this series:

**Includes:**

- ◆ Data on employed individuals drawing a paycheck (payroll employees).
- ◆ All employees, regardless of role, occupation or hours worked.
- ◆ HC&SA employees in the private sector only.
- ◆ Persons employed by health professionals in private practice.
- ◆ Both government and private sector workers in nonfarm employment data.

**Does not include:**

- ◆ Self-employed workers or volunteers, including health professionals in private practice.
  - ◆ HC&SA employees in the public sector (These are counted as government workers in monthly reports).
  - ◆ Information on hours worked or the quality of employment.
  - ◆ Government workers in HC&SA level data (Government workers, regardless of occupation and role, are classified as public sector employees).
-